

# 4-20 mA Transmitter

## ALARM OPTIONS

4-20 mA Transmitter for 7710, 7720, 7750



7710 with 4-20 mA Transmitter

To Convert the measured flow into a 4-20 mAdc signal, an angle of rotation transmitter is mounted to the indicator. This device is factory calibrated to ensure accuracy and should only be adjusted by King Instrument Company.

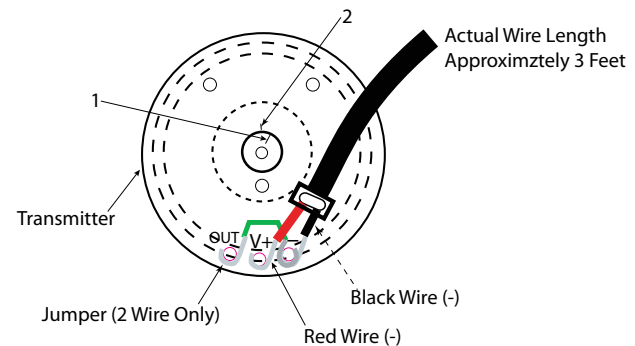
The proper and safe operation of the device requires that the specific listed below are not exceeded:

### SPECIFICATIONS

<b>Power Supply</b>	12 to 33Vdc
<b>Maximum Current Consumption</b>	40mA
<b>Temperature Limits</b>	-13° to 158° F ( -25° to 70° C)
<b>Output</b>	4 to 20 mAdc
<b>Accuracy</b>	<= 0.5%
<b>Linearity</b>	± 0.4%
<b>Influence From Bearing</b>	± 0.1%
<b>Temperature Influence (ambient)</b>	± 0.3% per degree C
<b>Power Supply Influence</b>	± 0.1%
<b>Load Resistance Influence</b>	± 0.1% at R max.

### ELECTRICAL CONNECTIONS

#### Transmitter Layout Rear View



**Zero:** Potentiometer P1 for zero point

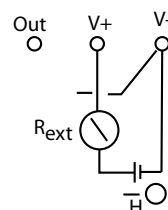
**SPAN:** Potentiometer P2 for measuring range and value

**1:** Zero point mark on transmitter housing

**2:** Zero point mark on transmitter shaft

**S1:** Switch for reversing rotation (Not Applicable)

#### 2- Wire Connection



**R<sub>ext</sub>:** External Resistance  
= Power Supply (V) - 12V  
Output Signal (mA)

**H:** DC Power Supply  
(12 - 33 V)